

# W:Hall

**FICHE TECHNIQUE**  
**TECHNISCHE FICHE**  
**TECHNICAL SHEET**

## **FABRY**

<https://www.locationwhall.com/fabry-1>

## **Contact**

Technical Director : Maxime Munson – [mmunson@whall.be](mailto:mmunson@whall.be) - +32 2 435 59 88

Stage Manager (Light) : Rudy Vantighem – [rvantighem@whall.be](mailto:rvantighem@whall.be) - +32 2 435 59 85

Stage Manager (Light) : Nicolas Moulart – [nmoulart@whall.be](mailto:nmoulart@whall.be) - +32 2 435 59 86

Stage Manager (Sound) : Jan Philips – [jphilips@whall.be](mailto:jphilips@whall.be) - +32 2 435 59 87

Stage Assistant : Besnik Bashota - [bbashota@whall.be](mailto:bbashota@whall.be) - +32 2 435 59 84

Room & Hosting manager : Miguel Caro – [mcaro@whall.be](mailto:mcaro@whall.be) - +32 2 435 59 82

## Sound

### Sound System

- 2x FOH D&B Y10P + V-GSUB
- 4x Dynacor VM 15"
- Desk Yamaha TF3
- Multi stage 20/4

### Micros

- 1x Sennheiser E840
- 6x Sennheiser E845
- 2x Sony TX-M02RC - Wireless
- 2x Audio Technica - Wireless (Micro Madonna)

### Player

- 1x Double CD Player
- 1x MD & DA Player
- 1x PC

### Backline

- 1 x Piano Steinway 3/4 model C

### Podium / Riser

- 25x 2m x 1m

### Podium height

- 40x 40cm
- 100x 60cm
- 40x 80cm
- 100x 100cm
- 20x 120cm

## Video

### Video Projector

- 1x Barco F80 – 9 000 Lumen

### Diffusion

- 1x Barco PDS

### Screen

- 1x Polichinelle Screen 8m x 8m

### Player

- 1x DVD / Blue Ray Palyer
- 1x PC

## Light

### Desk

- 1x Avolite Pearl
- 1x ADB Cantor

### Fixture

- 10x PAR LED Chauvet COLORado 1-Quad Zoom
- 18x ETC Source4
- 36x Pars 64 (CP 60-61-62)

### Fellowspot

- 2x Niethamer 2KW Halogen

### Smoke Machine

- 1x MDG ATM + FAN

### Power

- 48x RVE HDI 3KW dimmers

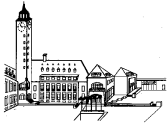
## Furniture

- 350x Chairs / Chaises / Stoelen
- 25x Round tables  
Tables rondes / Ronde tafels  
(Ø 180 cm - Maximum 10 places)
- 12x Catering Table  
Tables Traiteurs / Traiteur-tafels  
(175 cm x 75cm)
- 10x High bar Tables  
Tables hautes / Hoge receptietafels
- 10x Bistrot tabels  
Tables Bistrot / Bistrotafels

**AUCUNE VAISSELLE, NAPPAGE OU  
ACCESSOIRE N'EST MIS À DISPOSITION**

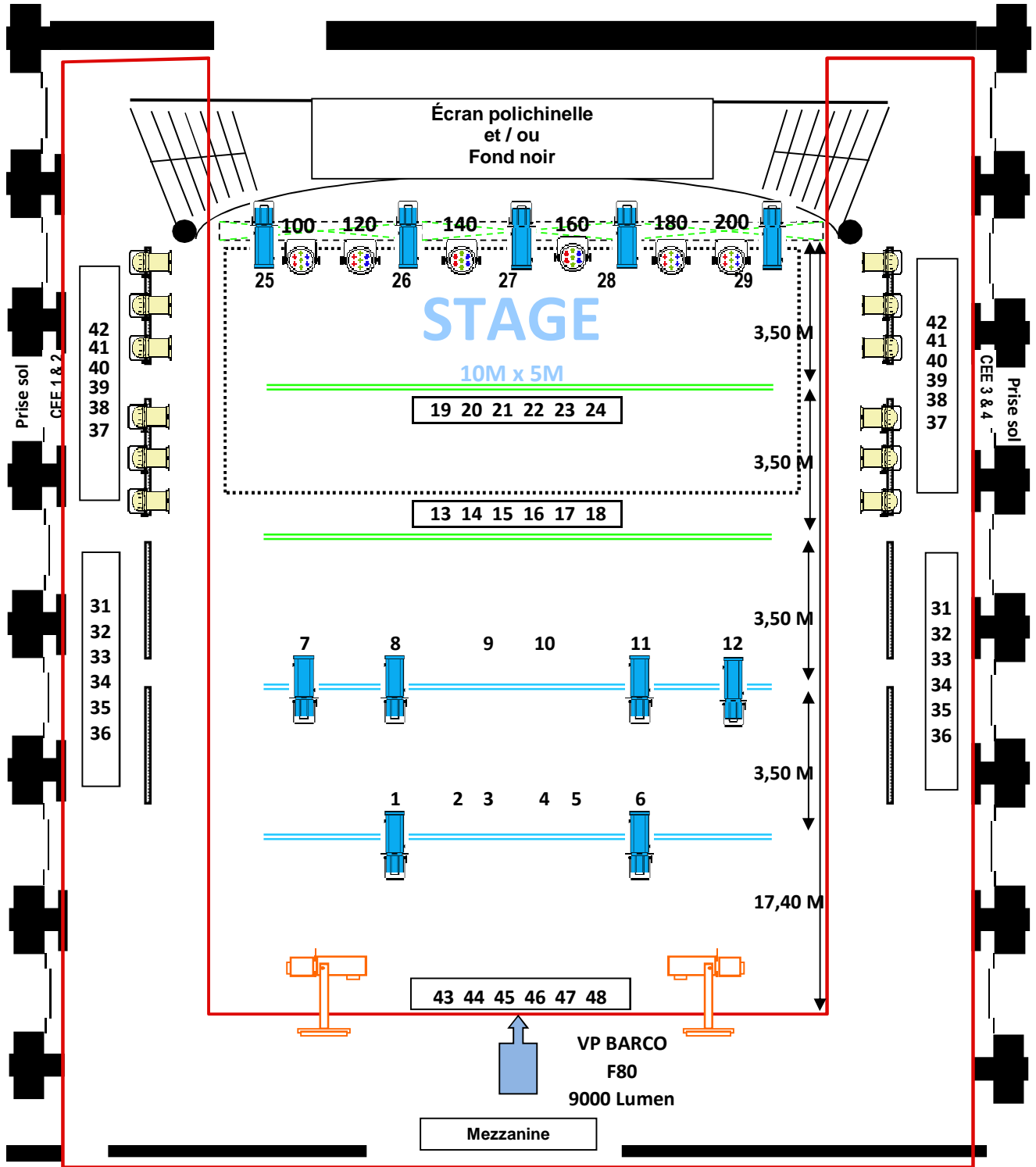
**ER WORDT / WORDEN GEEN VAATWERK /  
BENODIGDHEDEN TER BESCHIKKING GESTELD**

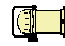
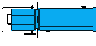





**NO DISHES, TABLECLOTH OR ANY KIND OF  
ACCESSORIES AVAILABLE**



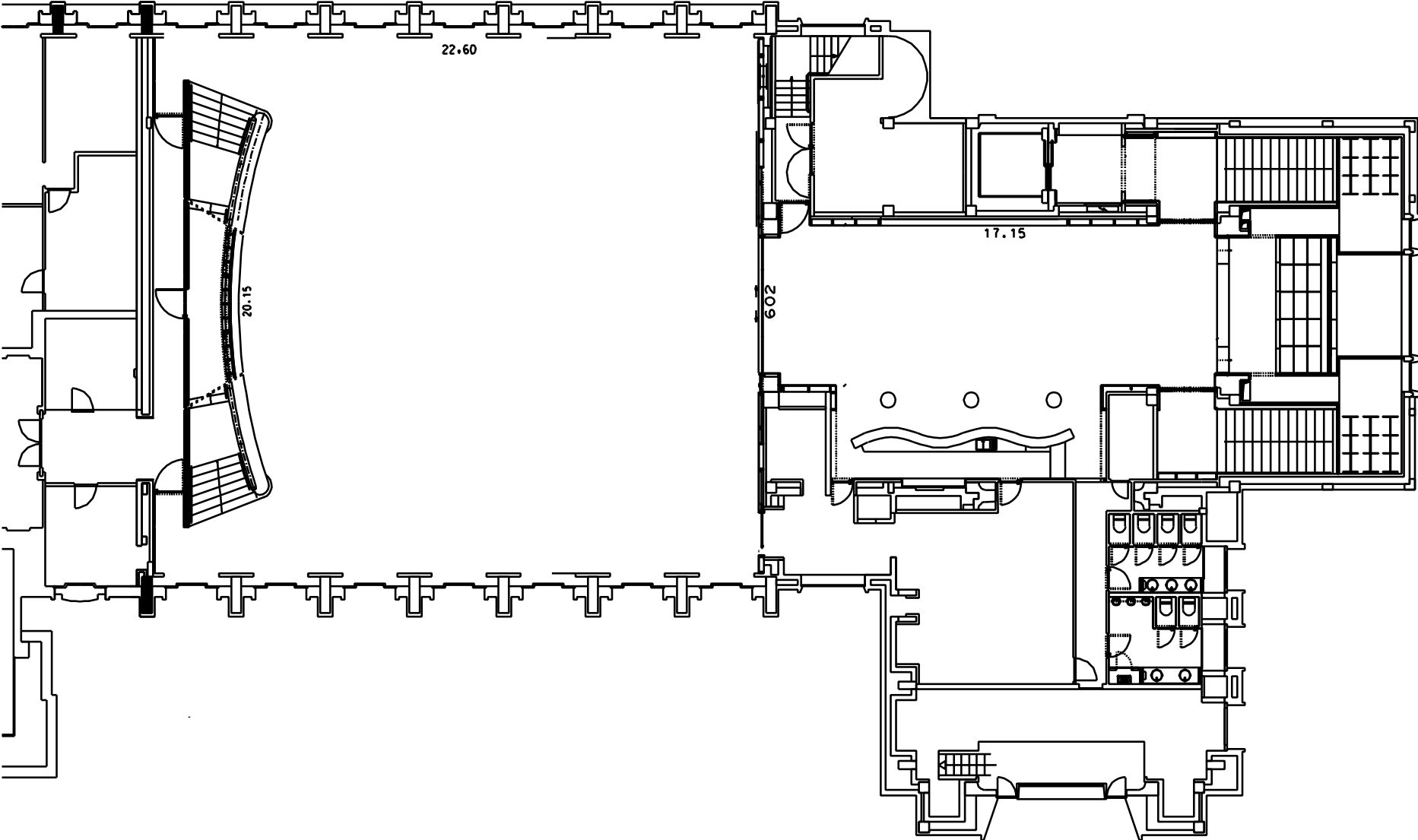
# PLAN D'ÉCLAIRAGE DE BASE DE LA SALLE FABRY

# W:Hall

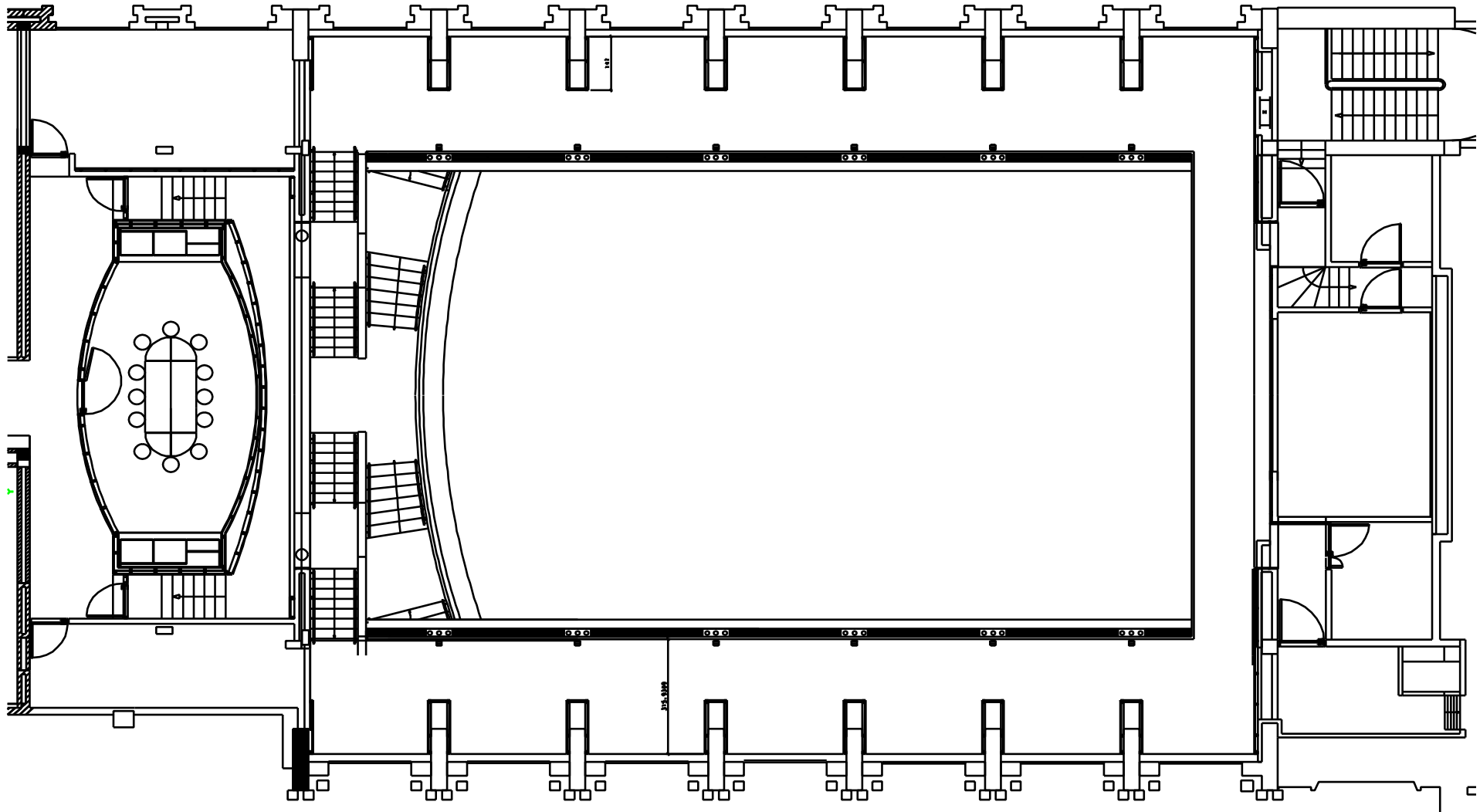


 <p>24 PAR 64 Galvanisés CP 60-61-62</p>	 <p>18 Découpes ETC Source Four Zoom</p>	 <p>10 PAR LED Chauvet COLORado 1- Quad Zoom DMX 100 &gt; 200</p>	 <p>Poursuite 2KW</p>	 <p>Pont de 13 mètre H40</p>
 <p>Perche Fixe - Hauteur 8m</p>		 <p>Perche Motorisée - Hauteur 8m</p>		

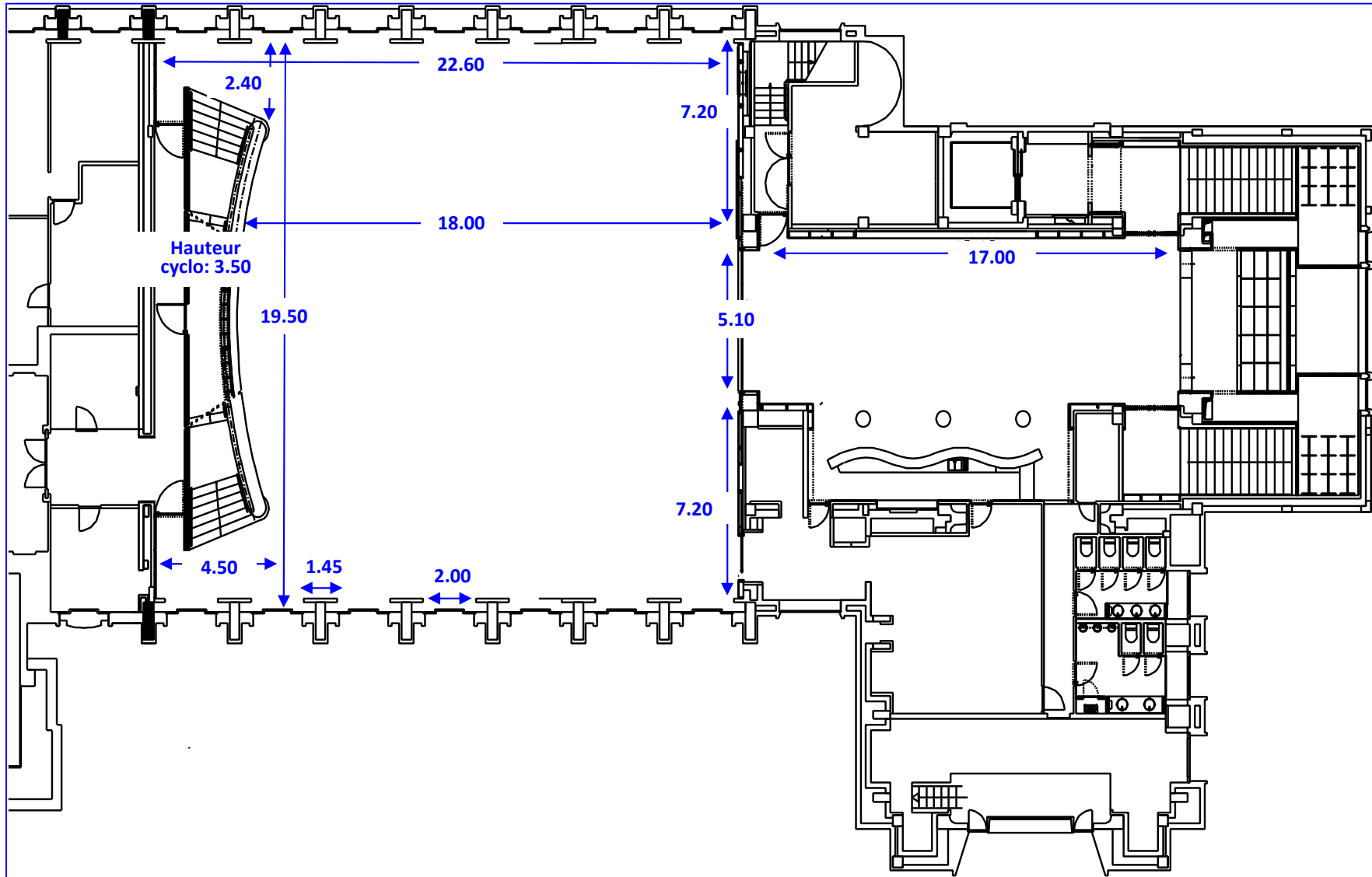
# FABRY



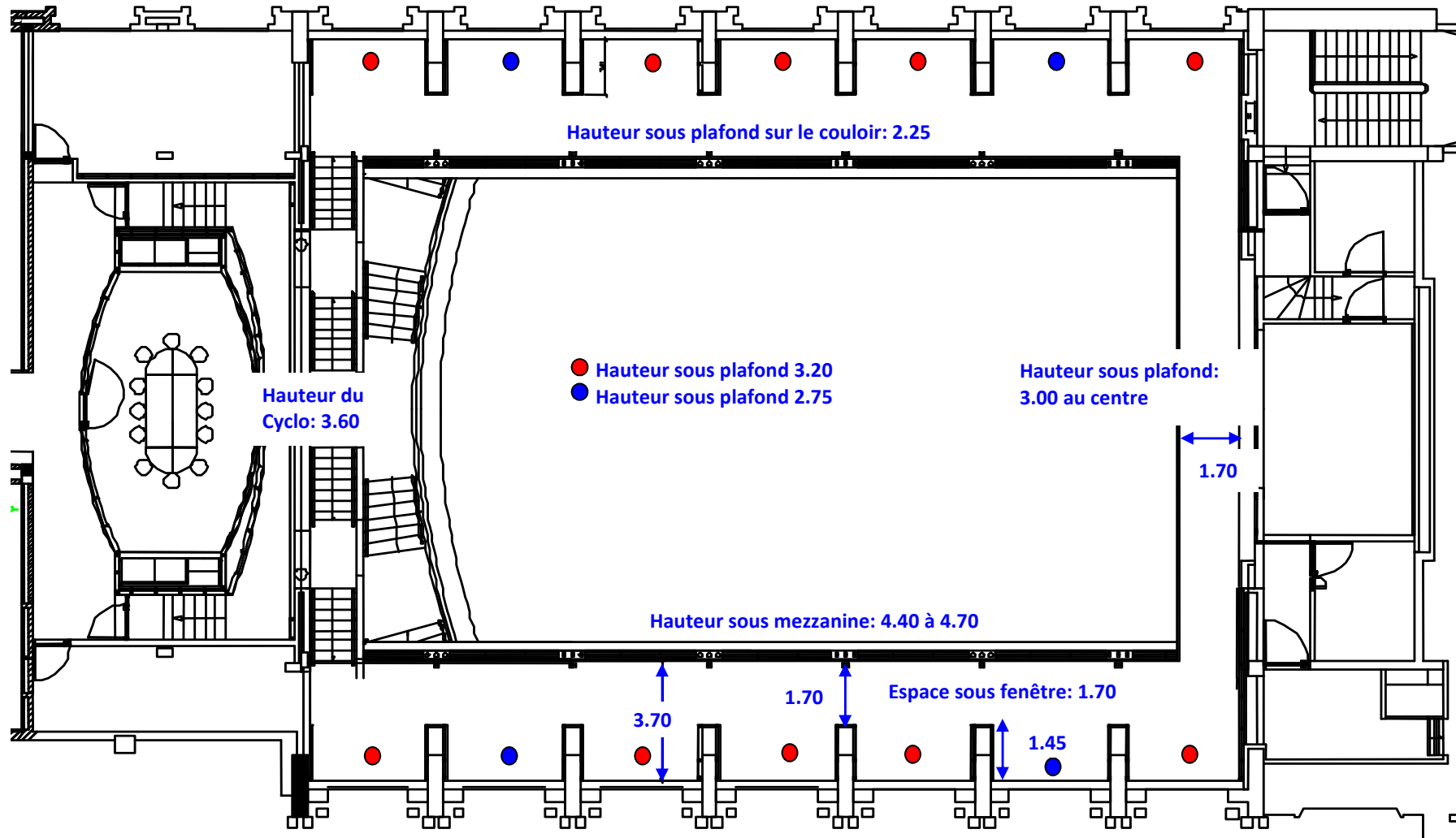
# FABRY - Mezzanine



# FABRY - Mesure



# FABRY - Mezzanine - Mesure

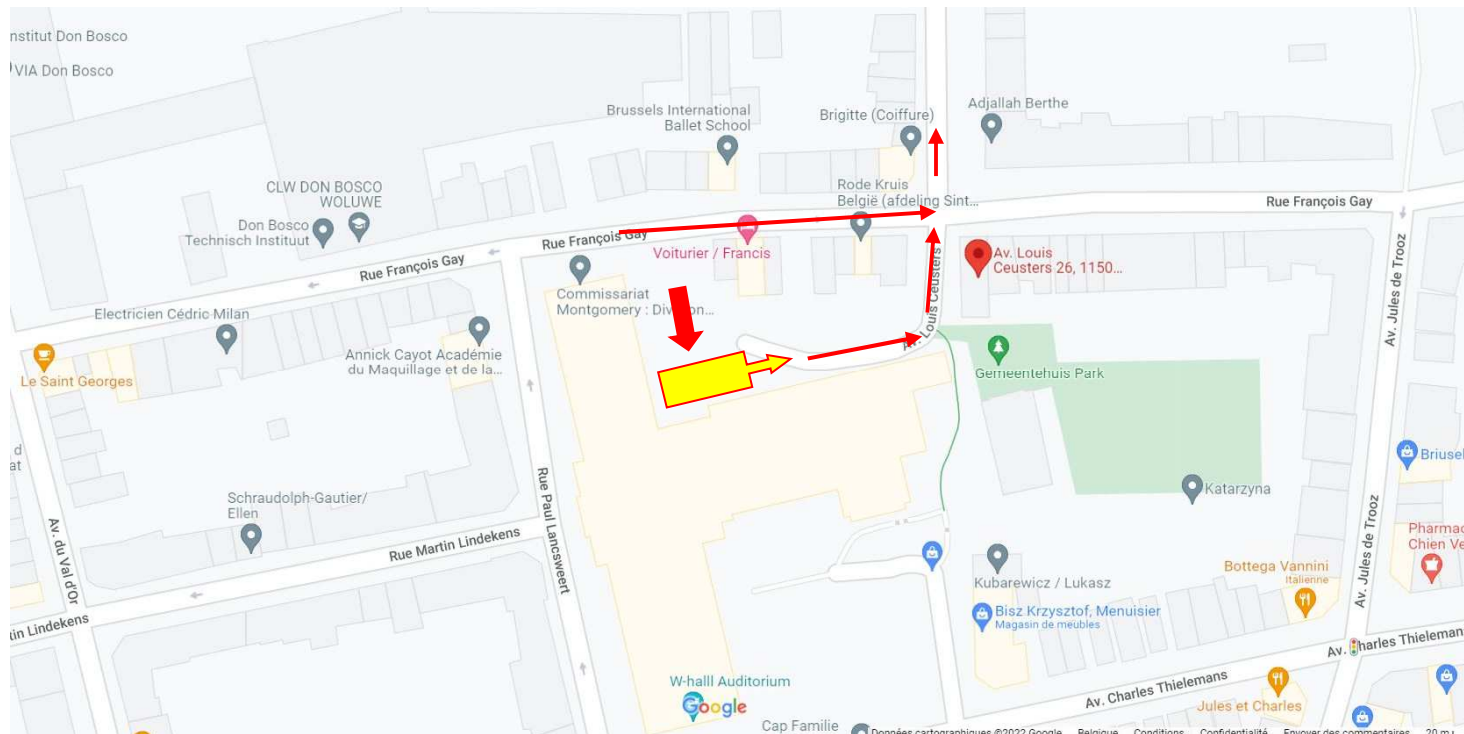


## Dock and Artist Parking (1x truck & 3x car)

### 26 Avenue Louis Ceusters, 1150 Brussels – Belgium

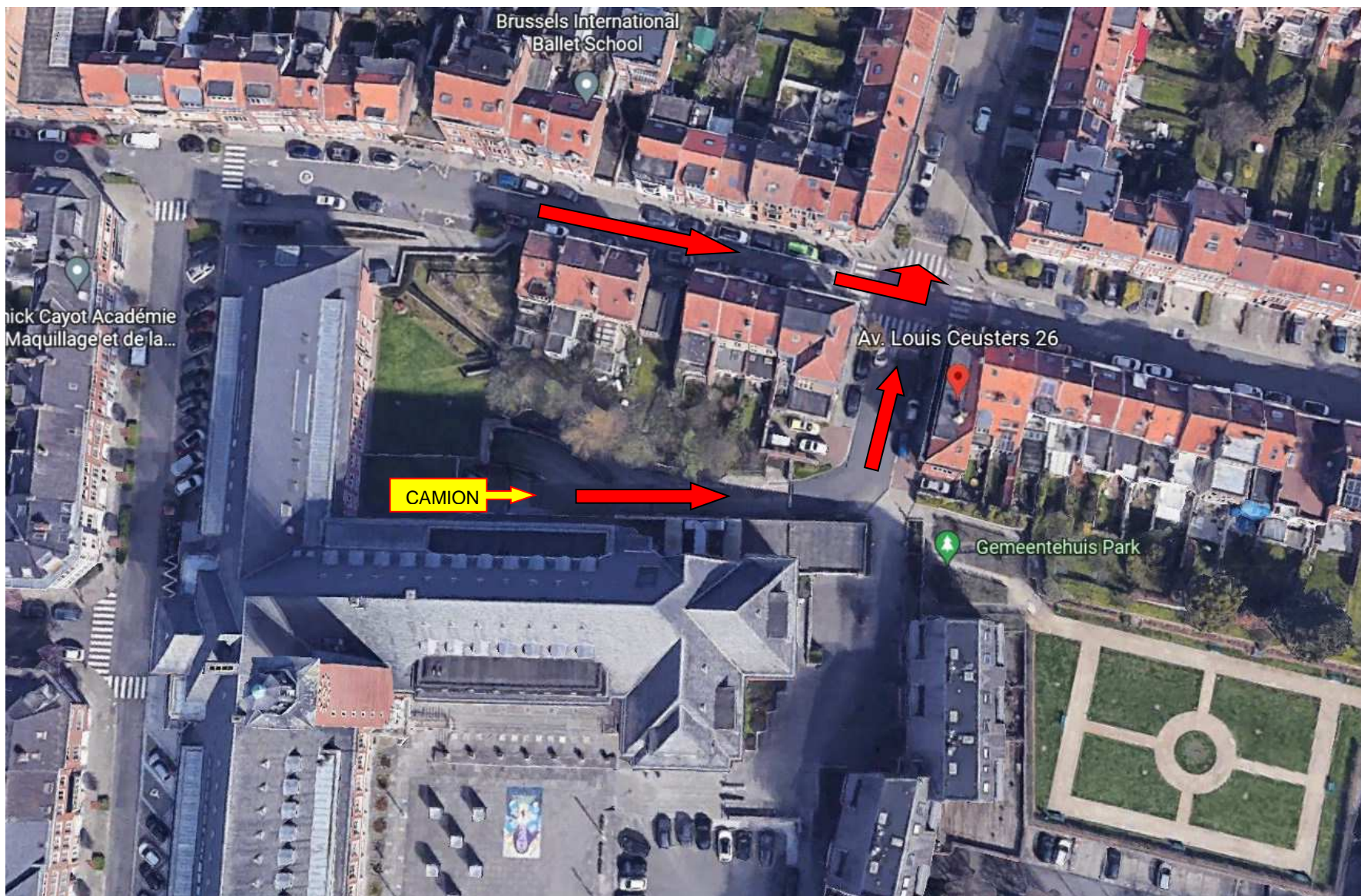
(Ne pas sonner et continuer au bout du chemin)  
(Niet aanbellen en doorlopen tot het einde van de straat)  
(Do not ring the bell and continue to the end of the street)

**LEVER L'ESSIEU ARRIÈRE DU BUS EN BAS DE LA RAMPE D'ACCÈS AFIN DE NE PAS FROTTER LE TIMON DE LA REMORQUE SUR LE BÉTON  
DE ACHTERAS VAN DE BUS ONDERAAN DE OPRIT OPHEFFEN ZODAT DE DISSEL VAN DE AANHANGWAGEN NIET OVER HET BETON SCHUURT  
LIFT THE REAR AXLE OF THE BUS AT THE BOTTOM OF THE ACCESS RAMP SO AS NOT TO RUB THE DRAWBAR OF THE TRAILER ON THE CONCRETE**



**W:Hall / Centre Culturel & de Congrès de WSP ASBL  
Avenue Ch. Thielemans, 93 - 1150 Bruxelles  
RPM Région de BXL-Capitale - N° d'entreprise : 412.532.585**





**W:Hall / Centre Culturel & de Congrès de WSP ASBL**  
**Avenue Ch. Thielemans, 93 - 1150 Bruxelles**  
**RPM Région de BXL-Capitale - N° d'entreprise : 412.532.585**