

W:Halll

FICHE TECHNIQUE
TECHNISCHE FICHE
TECHNICAL SHEET

V.2025-03

FABRY

<https://www.locationwhalll.com/fabry-1>

Contact

Technical Director : Maxime Munson – mmunson@whalll.be - +32 2 435 59 88

Stage Manager (Light) : Rudy Vantighem – rvantighem@whalll.be - +32 2 435 59 85

Stage Manager (Light) : Nicolas Moulart – nmoulart@whalll.be - +32 2 435 59 86

Stage Manager (Sound) : Jan Philips – jphilips@whalll.be - +32 2 435 59 87

Stage Assistant : Besnik Bashota - bbashota@whalll.be - +32 2 435 59 84

Room & Hosting manager : Miguel Caro – mcaro@whalll.be - +32 2 435 59 82

Sound

Sound System

- 2x FOH D&B Y10P + V-GSUB
- 4x Dynacord VM 15"
- Desk Yamaha TF3
- Multi 20/4

Micros

- 1x Sennheiser E840
- 6x Sennheiser E845
- 2x Sony TX-M02RC - Wireless
- 1x Audio Technica - Wireless (Micro Madonna)

Player

- 1x Double CD Player
- 1x MD Player
- 1x PC

Backline

- 1 x Piano Kawai GX7

Stage Decks

- 25x 2m x 1m

Stage Legs

- 40x 40cm
- 100x 60cm
- 40x 80cm
- 100x 100cm
- 20x 120cm

Video

Video Projector

- 1x Barco F80 – 9 000 Lumen

Diffusion

- 1x Barco PDS

Screen

- 1x Polichinelle Screen 8m x 8m

Player

- 1x DVD / Blue Ray Player
- 1x PC

Light

Desk

- 1x Avolite Pearl
- 1x ADB Cantor
- 1x Chamsys MQ70

Fixture

- 10x PAR LED Chauvet COLORado 1-Quad Zoom
- 18x ETC Source4
- 24x Pars 64 (CP 60-61-62)
- 4x PC 1KW ADB

Followspot

- 2x Niethamer 2KW Halogen

Smoke Machine

- 1x MDG ATM + FAN

Power

- 48x RVE HDI 3KW dimmers

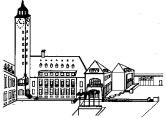
Furniture

- 350x Chairs / Chaises / Stoelen
- 25x Round tables
Tables rondes / Ronde tafels
(Ø 180 cm - Maximum 10 places)
- 20x Catering Table
Tables Traiteurs / Traiteur-tafels
(175 cm x 75cm)
- 10x High bar Tables
Tables hautes / Hoge receptietafels
- 10x Bistrot tabels
Tables Bistrot / Bistrotafels

**AUCUNE VAISSELLE, NAPPAGE OU
ACCESSOIRE N'EST MIS À DISPOSITION**

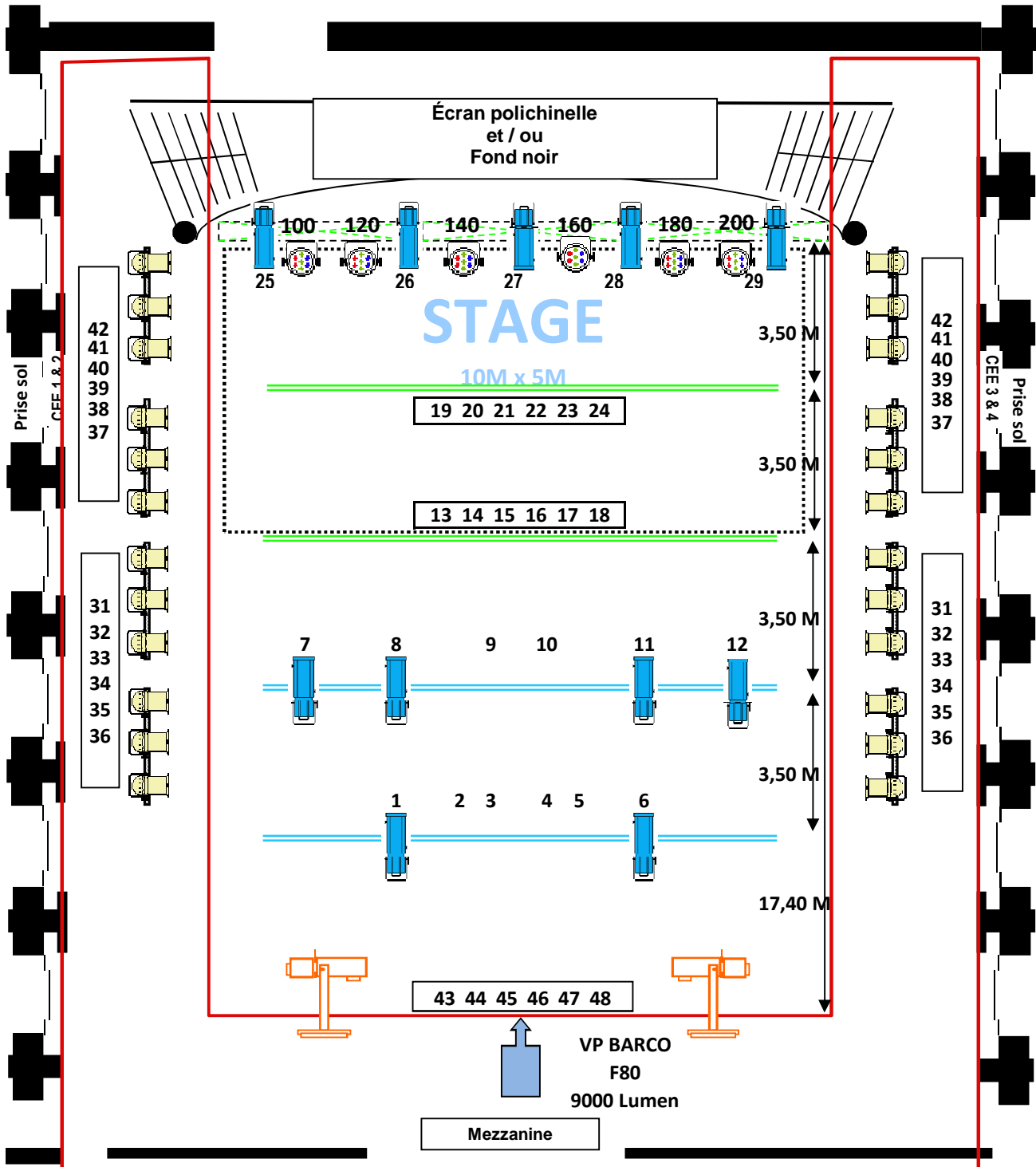
**ER WORDT / WORDEN GEEN VAATWERK /
BENODIGDHEDEN TER BESCHIKKING GESTELD**

**NO DISHES, TABLECLOTH OR ANY KIND OF
ACCESSORIES AVAILABLE**



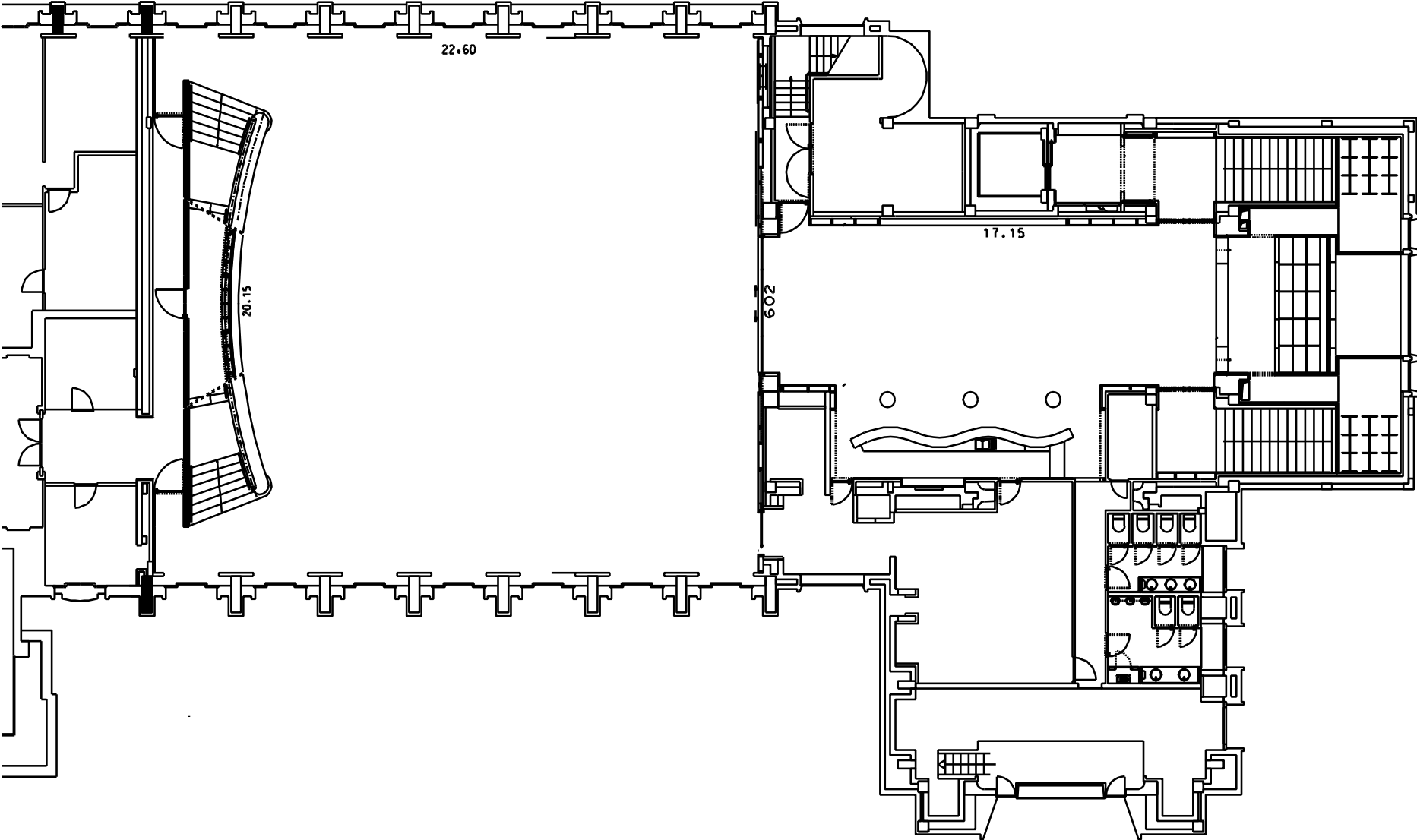
FABRY PLAN D'ÉCLAIRAGE DE BASE

W:Hall

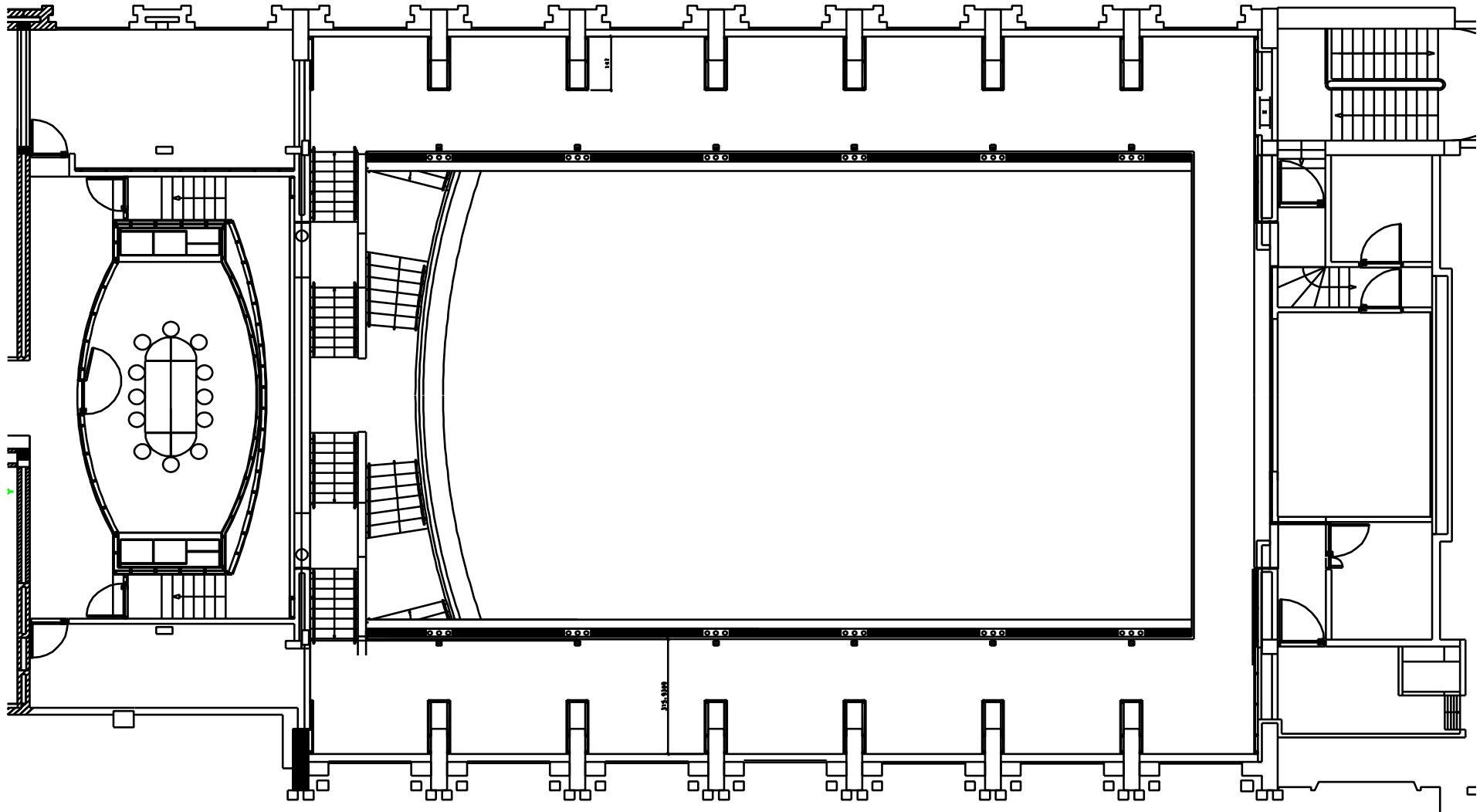


<p>24 PAR 64 Galvanisés CP 60-61-62</p>	<p>18 Découpes ETC Source Four Zoom</p>	<p>10 PAR LED Chauvet COLORado 1- Quad Zoom</p>	<p>Poursuite 2KW</p>	<p>Pont de 13m H40</p>
<p>Perche Fixe - Hauteur 8m</p>		<p>4 PC 1KW ADB</p>	<p>Perche Motorisée - Hauteur 8m</p>	

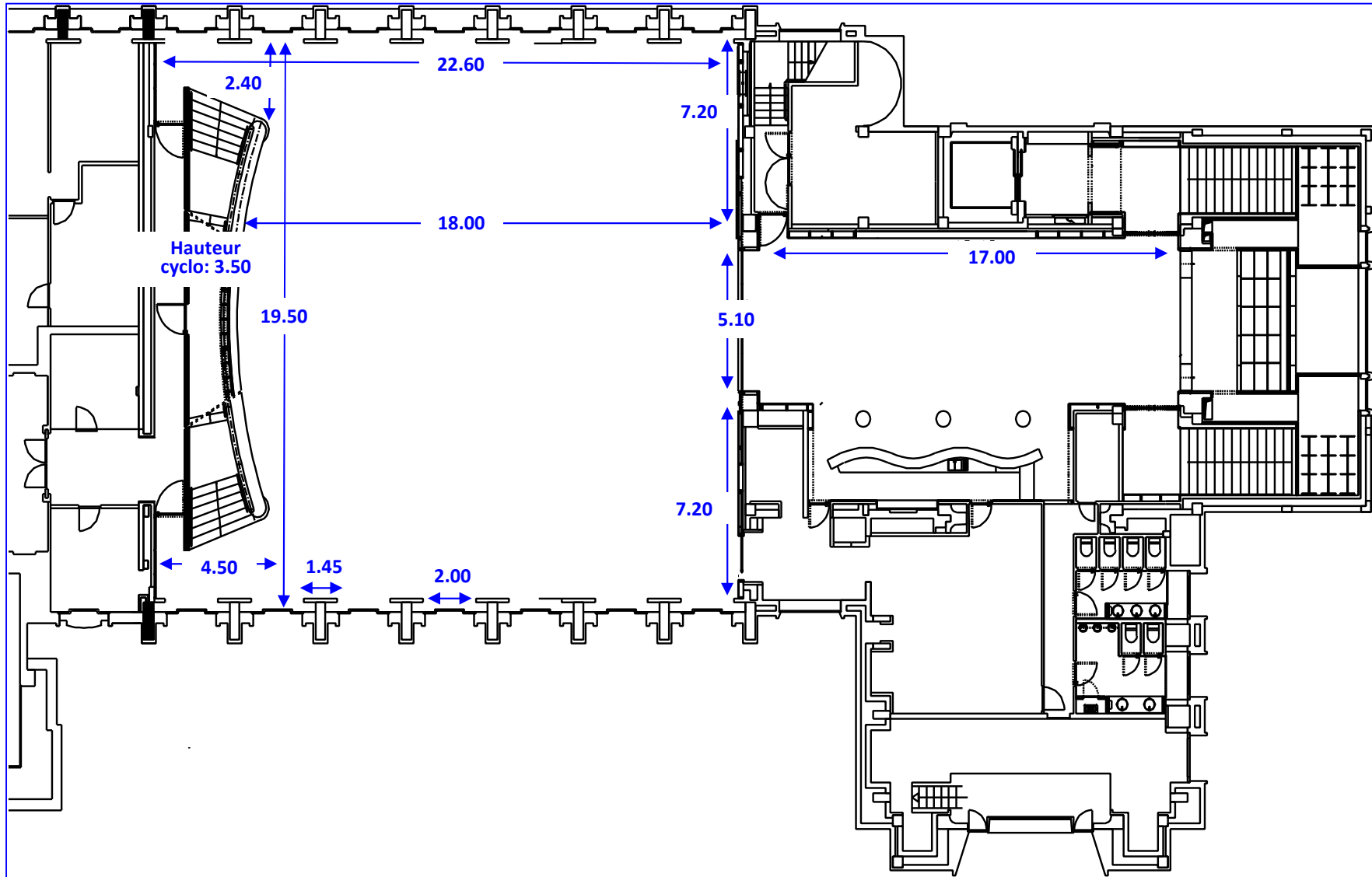
FABRY



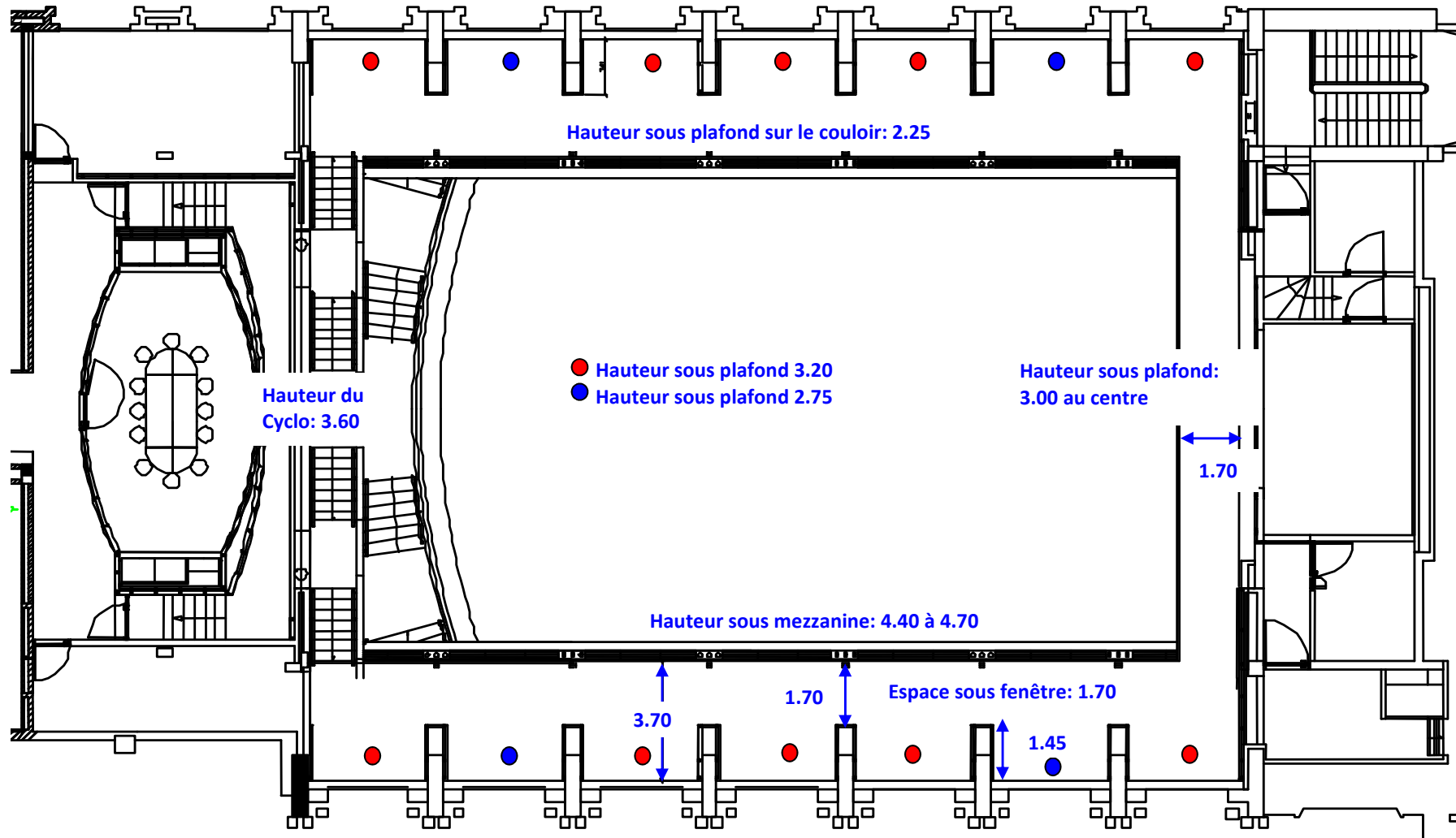
FABRY - Mezzanine



FABRY - Mesure



FABRY - Mezzanine - Mesure

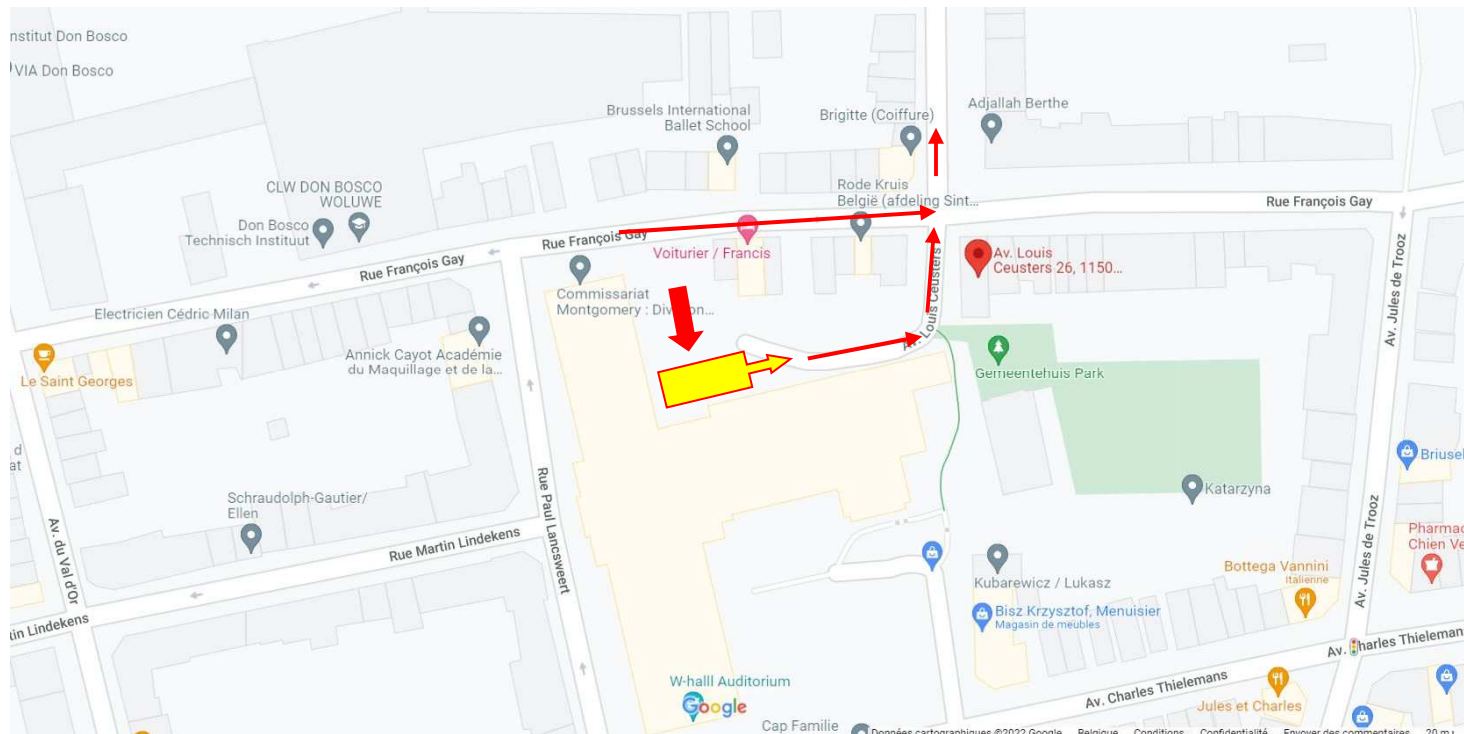


Dock and Artist Parking (1x truck & 3x car)

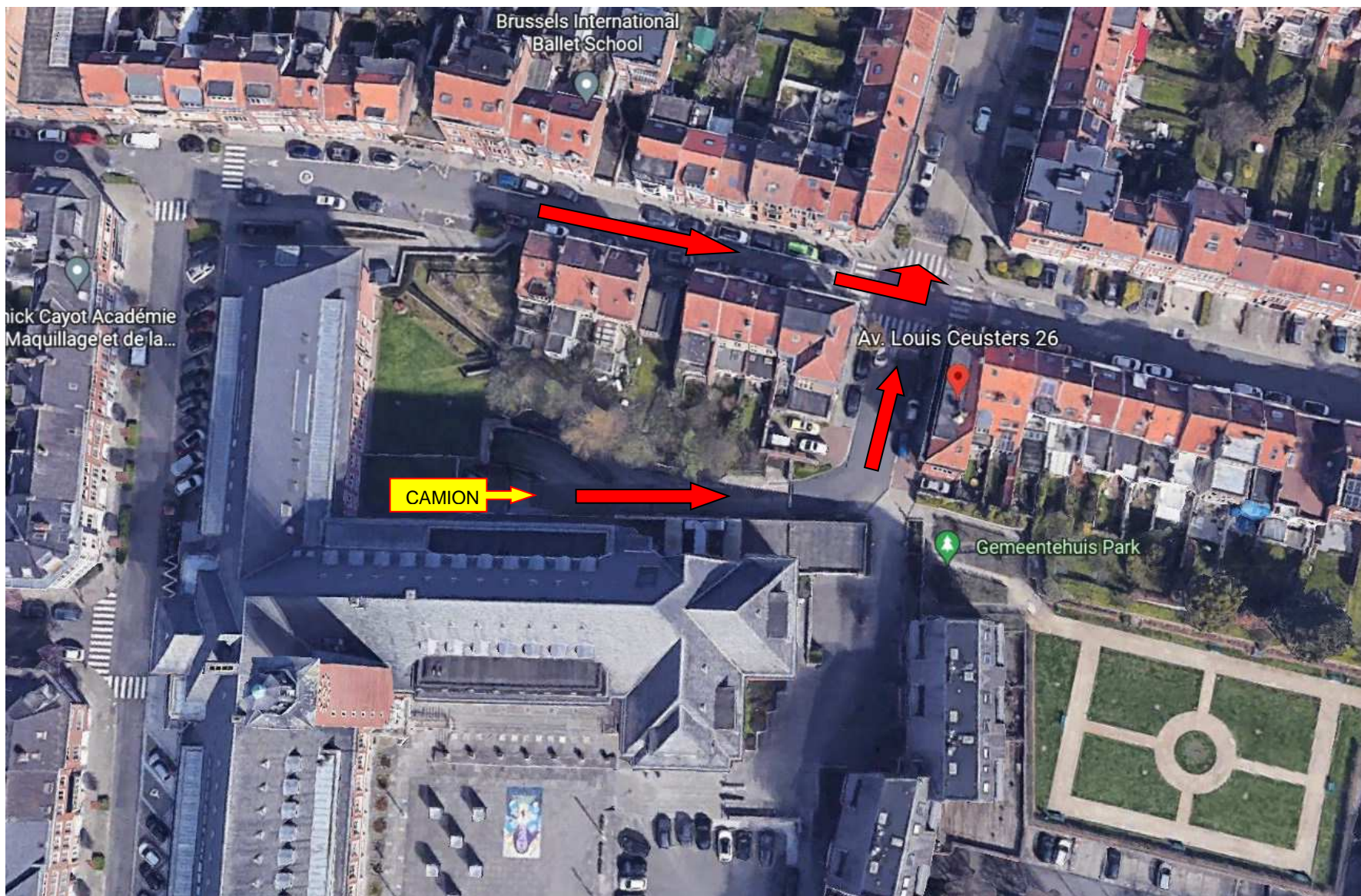
26 Avenue Louis Ceusters, 1150 Brussels – Belgium

(Ne pas sonner et continuer au bout du chemin)
(Niet aanbellen en doorlopen tot het einde van de straat)
(Do not ring the bell and continue to the end of the street)

**LEVER L'ESSIEU ARRIÈRE DU BUS EN BAS DE LA RAMPE D'ACCÈS AFIN DE NE PAS FROTTER LE TIMON DE LA REMORQUE SUR LE BÉTON
DE ACHTERAS VAN DE BUS ONDERAAN DE OPRIT OPHEFFEN ZODAT DE DISSEL VAN DE AANHANGWAGEN NIET OVER HET BETON SCHUURT
LIFT THE REAR AXLE OF THE BUS AT THE BOTTOM OF THE ACCESS RAMP SO AS NOT TO RUB THE DRAWBAR OF THE TRAILER ON THE CONCRETE**



**W:Hall / Centre Culturel & de Congrès de WSP ASBL
Avenue Ch. Thielemans, 93 - 1150 Bruxelles
RPM Région de BXL-Capitale - N° d'entreprise : 412.532.585**



W:Hall / Centre Culturel & de Congrès de WSP ASBL
Avenue Ch. Thielemans, 93 - 1150 Bruxelles
RPM Région de BXL-Capitale - N° d'entreprise : 412.532.585